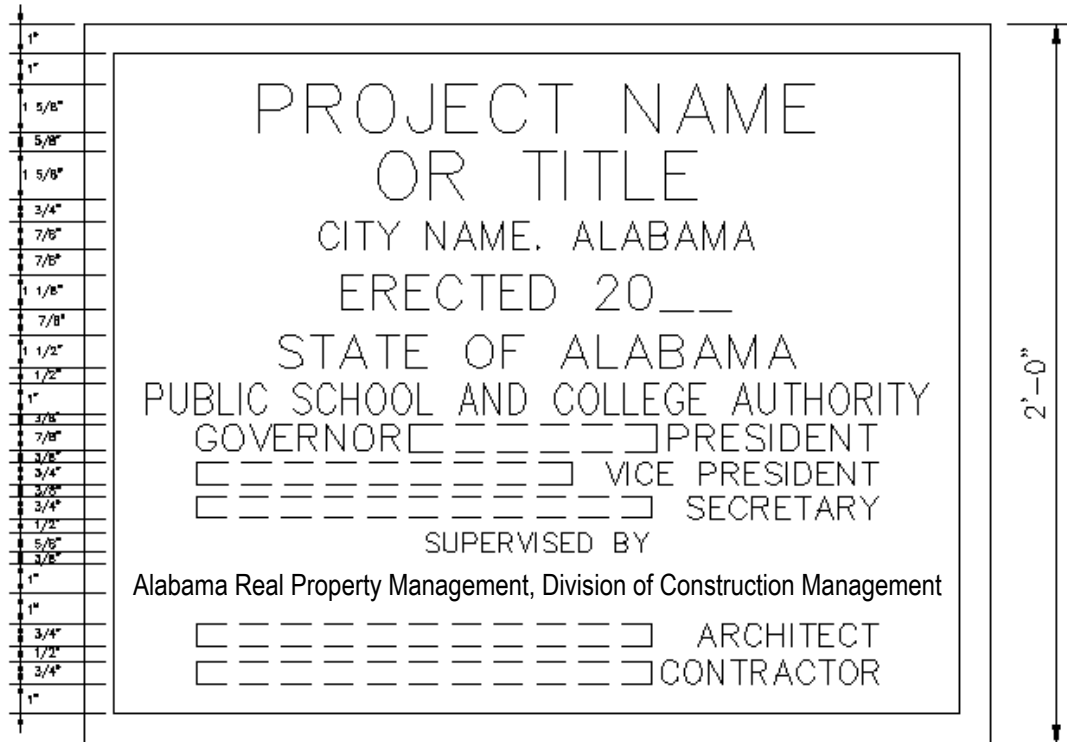


### Detail of PSCA Plaque



**Notes:**

1. PSCA plaques are installed as a permanent part of a building and are required on the following partially or fully PSCA-funded projects: Major renovations, renovations of four (4) or more rooms, and all new construction as follows: buildings, additions, and athletic facilities. DCM Form 9-M must be included in the project manual of such projects.  
**Exception: Alabama Community College System (ACCS) PSCA-funded projects with Notice-To-Proceeds issued after July 31, 2021 are not submitted to DCM.**
2. PSCA plaques are not required on the following partially or fully PSCA-funded projects: Sitework, paving, parking lots, utility work, re-roofing, and finishes (such as painting). DCM Form 9-M should not be included in the project manual of such projects.
3. Guidance for determining the names of PSCA officials:  
  - The PSCA President is the current Governor of Alabama.
  - The PSCA Vice President is the current State Superintendent of Education.
  - The PSCA Secretary is the current Director of the Alabama Department of Finance.